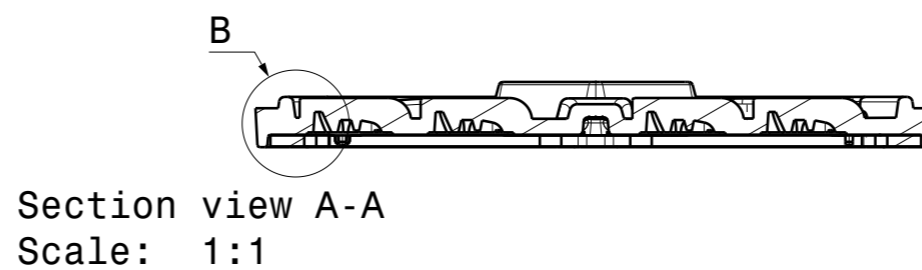
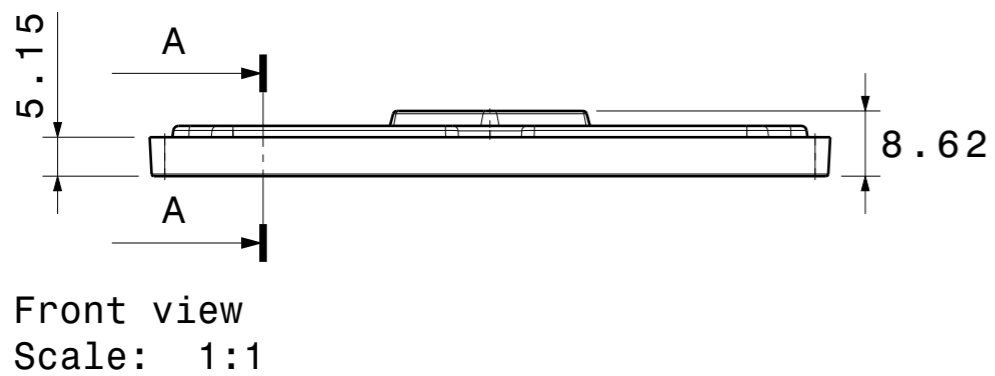


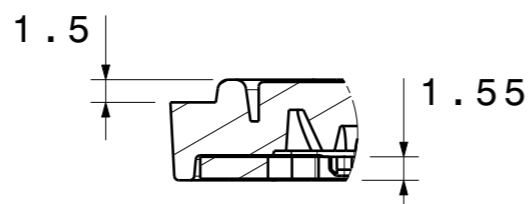
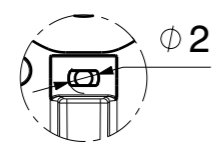
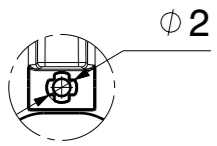
Isometric view
Scale: 1:2



CS16974_STRADA-IP-16MX-T3-M

COMPONENTS

INDEX	PART	TYPE	MATERIAL	COLOR / COATING
1	C16782_STRADA-IP-8MX-SEAL	seal	Silicone	white
2	C16971_STRADA-IP-16MX-T3-M	lens	PMMA	transparent



MECHANICAL DRAWING		LEDiL [®]
PRODUCT STRADA-MAXI		
Plastic moulding general tolerances according to DIN 16901-130 and applies if not otherwise shown in the drawing. Silicone moulding general tolerances according to ISO 3302-1 Class M3 and applies if not otherwise shown in the drawing.	FIRST ANGLE PROJECTION: 	This drawing is the property of LEDiL Oy. It may not be copied or otherwise distributed without prior written permission from LEDiL Oy.
SCALE 1:1	WEIGHT 31,75 g	A3 SHEET 1/1

- Notes**
- PCB or heatsink level.
 - LED location
 - Ensure LED fitting from a product specific 3D model available from www.ledil.com
 - For more details about installation please see LEDiL Installation Guide on www.ledil.com